

---

# **Using the ApSIC Xbench Plugin for SDL Trados Studio 2014**

Copyright © 1999-2014 ApSIC S.L.  
All rights reserved

The software described in this documentation contains proprietary information of ApSIC S.L. and is protected by copyright law.

Due to continued product development, this information may change without notice. The information and intellectual property contained herein is confidential between ApSIC S.L. and the user, and remains the exclusive property of ApSIC S.L. If you find any problems in the documentation, please report them to us in writing. ApSIC, S.L. does not warrant that this document is error-free.

No part of this publication may be reproduced, stored in a retrieval system, or transmitted in any form or by any means, electronic, mechanical, photocopying, recording or otherwise without the prior written permission of ApSIC, S.L.

This document may contain trademarks or registered trademarks that are the property of their respective owners and ApSIC acknowledges such ownership.

The logo for ApSIC, featuring the company name in a stylized blue font with a slight 3D effect.

**ApSIC, S.L.**

Caballero, 76 4-3

08029 Barcelona

Spain

Website: <http://www.xbench.net>

# Contents

<b>Introduction</b>	<b>1</b>
<hr/>	
<b>Installing and Uninstalling the ApSIC Xbench Plugin for Trados SDL Studio</b>	<b>3</b>
<hr/>	
Installing the Plugin .....	3
Uninstalling the Plugin .....	3
<b>Using the Plugin</b>	<b>5</b>
<hr/>	
<b>Reporting Bugs and Making Suggestions</b>	<b>9</b>
<hr/>	



# Introduction

The ApSIC Xbench Plugin for SDL Trados Studio 2014 allows you to:

- From SDL Trados Studio 2014, create an Xbench project automatically gathering information from your current SDL Trados Studio 2014 project, and then automatically launch ApSIC Xbench so that you can run QA on the files of the project.
- From ApSIC Xbench, use the **Edit Source** command from the **Search** tab or the **QA** tab to open a sdlxliff file in SDL Trados Studio right at the segment that is currently selected in Xbench and in the SDL Trados Studio project context (connected translation memory and termbase).



---

## CHAPTER 1

# Installing and Uninstalling the ApSIC Xbench Plugin for Trados SDL Studio

Before you install the ApSIC Xbench Plugin for SDL Trados Studio 2014, you need to make sure that you have the following software installed on your machine:

- **SDL Trados Studio 2014 SP1.** The **Help->About SDL Trados Studio** box should show version **11.1.3931** or later.
- **ApSIC Xbench 3.0 build 1186** or later.

If you do not have these versions, please download and install them before installing the plugin.

You can download ApSIC Xbench 3.0 and the ApSIC Xbench Plugin for SDL Trados Studio 2014 from the **Download** page at <http://www.xbench.net>. The plugin installable file can be used both with the 32-bit and the 64-bit editions of ApSIC Xbench 3.0.

---

## Installing the Plugin

To successfully install the plugin, you need administrative rights. The plugin will be installed for all SDL Trados Studio users on the machine. After installing the plugin, you need to run at least once SDL Trados Studio 2014 as administrator to unpack the plugin. This is especially important if you install the plugin on a Terminal Server, where there can be users without administrative rights.

To install the plugin, click the **Setup.Xbench.Plugin.Studio.3.0.n.exe** that is found in the file you downloaded from <http://www.xbench.net>, and follow the installation wizard instructions.

---

## Uninstalling the Plugin

To uninstall the ApSIC Xbench Plugin for SDL Trados Studio 2014, simply go to the Windows **Control Panel** and uninstall it.

Please note that you need administrative rights to uninstall the plugin.

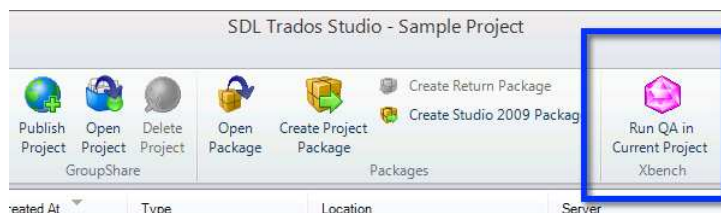




## CHAPTER 2

# Using the Plugin

When you launch SDL Trados Studio with the ApSIC Xbench Plugin installed, the first thing you will probably notice is that the ribbon for the **Projects** view has a new guest.



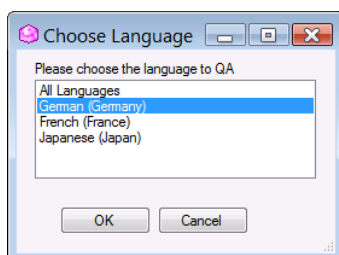
The ApSIC Xbench Plugin installs an icon in these three ribbons:

- The **Home** ribbon of the **Projects** view
- The **Home** ribbon of the **Files** view
- The **Review** ribbon of **Editor** view

Any of these icons performs the same action: **Run QA in Current Project**.

The **Run QA in Current Project** action does the following:

- 1 Creates an ApSIC Xbench project (.xbp extension) with the following items:
  - All sdlxliff files for the current project loaded as ongoing translation and with medium priority (red color). If your project has more than one target language, the **Choose Language** dialog will appear.

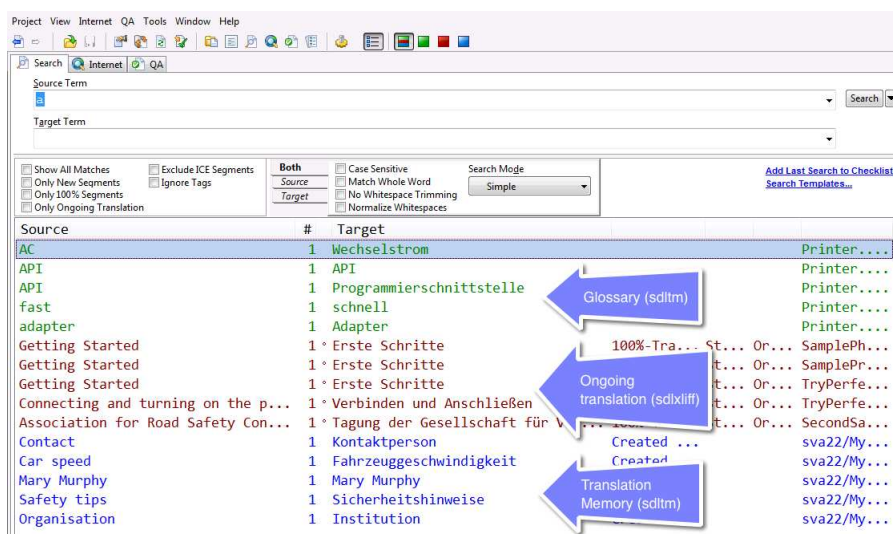


- The first file-based translation memory with *.sdltm* extension found for the language in the SDL Trados Studio project settings. The ApSIC Xbench plugin first scans the language-specific settings and if no translation memory is found, it proceeds with the **All Language Pairs** settings. This translation memory is loaded with low priority (blue color) in the Xbench project. You can disable the load of the translation memory using ApSIC Xbench by choosing **Tools->Settings->Studio Plugin** and then deselecting the **Add first local translation memory** checkbox. **Note:** If you choose **All Languages** in the **Choose Language** dialog, this file will not be loaded in the Xbench project.
- The first file-based termbase with *.sdltb* or *.mdb* extension found for the language in the SDL Trados Studio project settings. This MultiTerm glossary is loaded with high priority (green color) in the Xbench project. You can disable the load of the termbase by using ApSIC Xbench by choosing **Tools->Settings->Studio Plugin** and then deselecting the **Add first local termbase** checkbox. **Note:** If you choose **All Languages** in the **Choose Language** dialog, this file will not be loaded in the Xbench project.

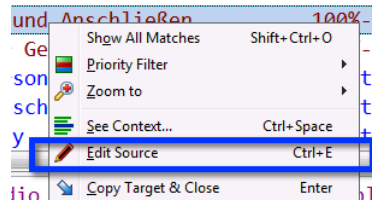
- 1 Launches ApSIC Xbench to load the project and opens the **QA** tab in ApSIC Xbench.

Once in Xbench, you can select your desired QA settings and choose **Check Ongoing Translation** to run the QA. Please remember that only ongoing translation files (in our case the *sdlxliff* files) are considered for QA. Any other files are considered reference for ad hoc searches.

During QA, you may want to search your *sdlxliff* files and the glossary or translation memory. You can do so in the **Search** tab of ApSIC Xbench. The illustration below shows how the information is organized in the generated Xbench project.



When you find an item in the **Search** or **QA** tabs that you want to change, simply choose the item, right-click and then choose **Edit Source**. You can also press **Ctrl+E** as a shortcut to run the **Edit Source** command. When you do so, SDL Trados Studio will go to the foreground and the **Editor** view will open the file right at the segment that you chose in ApSIC Xbench.



Once you have made your change in SDL Trados Studio, you can go back to Xbench using the **Alt+Tab** hot key.

After you have done your QA changes in SDL Trados Studio, you can quickly run a regression QA pass by pressing again the icon in the ribbon. When you click the ribbon icon, the Xbench plugin will save any unsaved files and will create a new Xbench project with the updated files.

If you want to run a QA for only some of the files in the SDL Trados Studio project, simply go to the SDL Trados Studio **Files** view, select the desired files, right-click to bring up the popup menu and then choose **Run QA in Selected Files with Xbench**.



## CHAPTER 3

# Reporting Bugs and Making Suggestions

Your feedback on any errors in the program is most welcome. We are also open to suggestions as to how we can improve areas that you find confusing.

Please send your bug report or suggestion to  
*<http://www.xbench.net/index.php/support/submit-bug>*

Any information you send to us will be kept confidential and it will be used solely to resolve the issue.